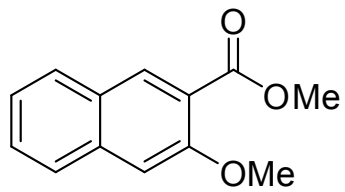


Methyl 3-methoxy-2-naphthoate  
400 MHz, 1H, CDCl3



8.32  
7.84  
7.82  
7.76  
7.74  
7.53  
7.39  
7.22

4.02  
3.97

Integration values for aromatic region: 1.00, 1.04, 1.02, 1.06, 1.08, 1.04

6.11

11.5 11.0 10.5 10.0 9.5 9.0 8.5 8.0 7.5 7.0 6.5 6.0 5.5 5.0 4.5 4.0 3.5 3.0 2.5 2.0 1.5 1.0 0.5 0.0 -0.5

